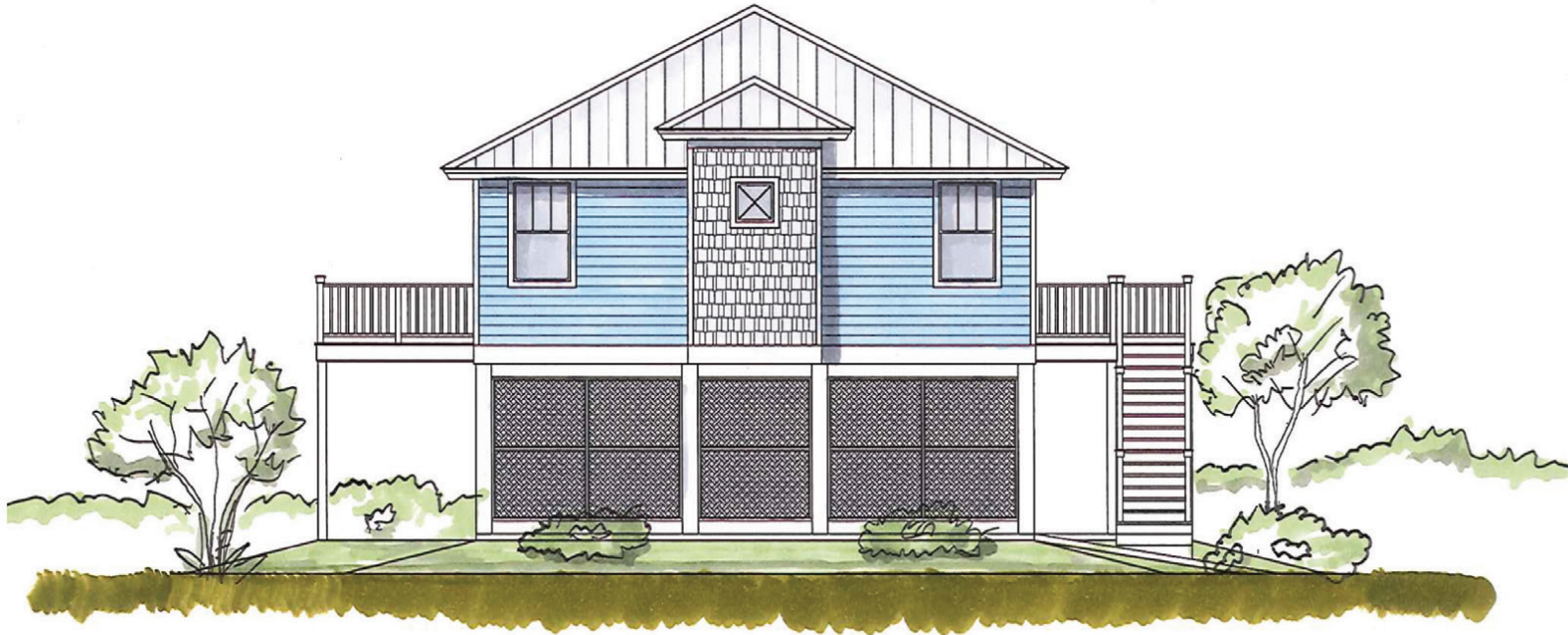


# OAK RIDGE SUBDIVISION HOME BUILDING PLANS

## KIWI

BEDROOMS 3  
BATHROOMS 2.5

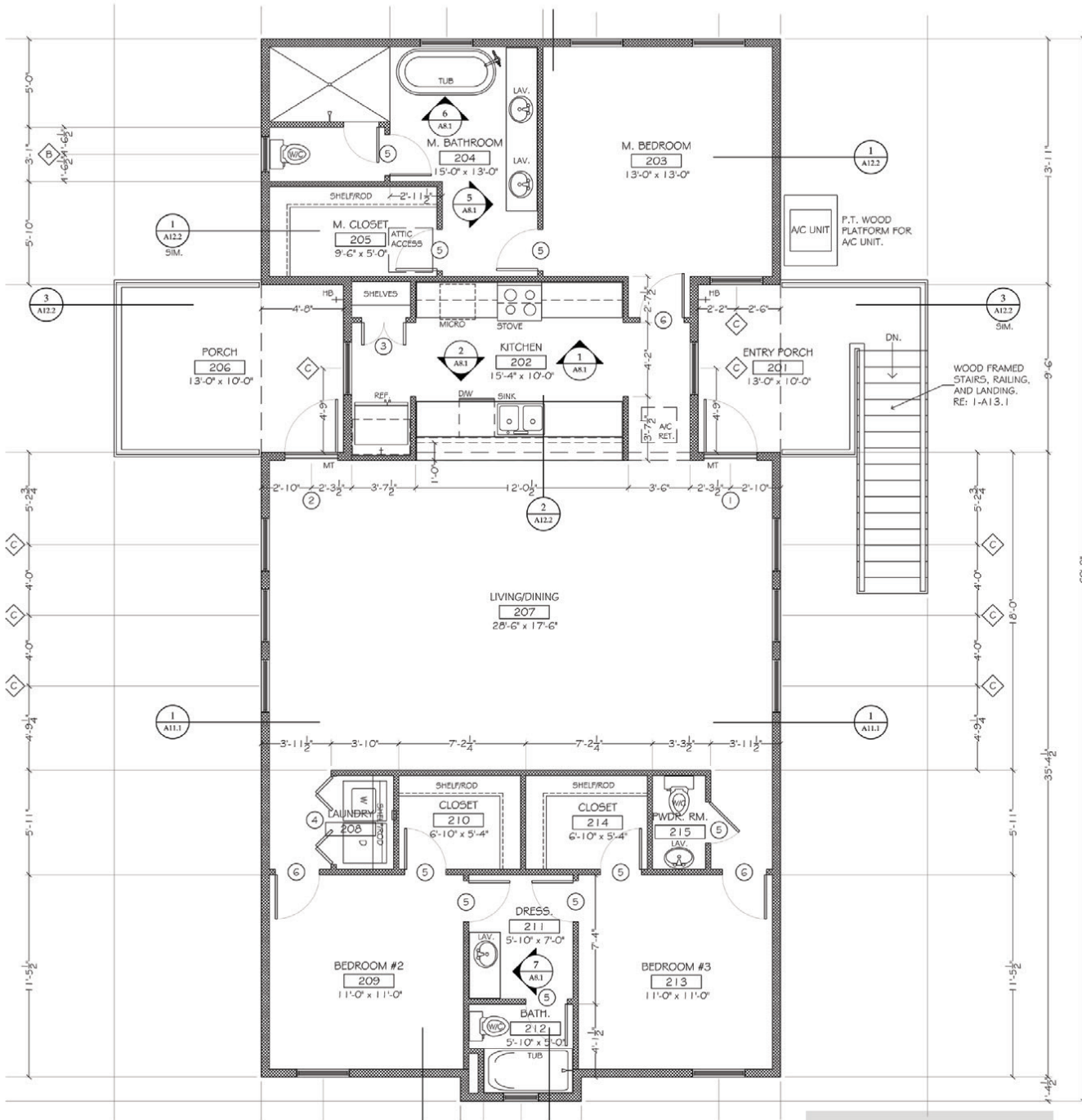


DWELLING	SQ. FT.	DWELLING	SQ. FT.
Ground Storage	N/A	Porches	90
1st Living	1,650	Parking / Open Storage	1,740
Enclosed Subtotal	1,650	Total Under Beam	3,480

# OAK RIDGE SUBDIVISION HOME BUILDING PLANS

## KIWI

BEDROOMS 3  
BATHROOMS 2.5



FLOOR PLAN

# OAK RIDGE SUBDIVISION HOME BUILDING PLANS

## TYPICAL FINISH SCHEDULE - may vary from plan to plan -

ROOM	FLOORS	ALLOWANCE
Kitchen, Family/Living, Dining	Vinyl Plank	\$3.50/SF
All Baths & Utility	Ceramic tile	\$6.50/SF, Labor and Material
All Bedrooms & Closets	Carpet	\$23.00/SY, Labor and Material
Parking Area	Concrete	
Porches	Treated wood	
<b>COUNTERTOPS:</b>	All countertops are made of 2cm granite	
<b>CABINETS:</b>	Custom, all wood, recessed maple painted Shaker cabinets	
<b>MASTER TUB:</b>	6-foot soaking tub	
<b>MASTER SHOWER:</b>	Man-made marble shower floor & walls with tempered glass door	
<b>GUEST BATH:</b>	5-foot cast iron tub with a man-made marble alcove finished to 7 feet	

### APPLIANCE ITEMS:

30" Self Cleaning range, stainless finish  
 Vented hood, stainless finish  
 Dishwasher, stainless finish  
 Disposal, 1/2 hp  
 Microwave Drawer

### MODEL #:

GE JB255  
 GE JV348  
 GE GSD 4060  
 GE GFC 525  
 Sharp 24" Model

### MILLWORK:

#### INTERIOR DOORS:

Solid core masonite w/ 3 1/4 finger jointed casing

#### WINDOW TRIM:

Stool - apron - casing. All windows trimmed out

BASE: 7 1/4" Colonial MDF material  
 SHOE: 3/4" quarter round wood  
 CROWN: 4 5/8" Colonial MDF material  
 CASING: 3 1/4" Colonial wood  
 HARDWARE: Sea Cliff - bronze  
 WIRE SHELVING: \$500 Allowance

### SHUTTERS:

All shall be fixed, aluminum, pre-finish units

### SHELVING:

All closets w/ coated-wire shelving material.

### PAINTING:

The exterior Hardi material shall receive one primer coat placed over the factory primed board and one finish coat of paint. The interior ceilings shall receive one coat of flat latex. The walls shall receive a prime coat then a rolled-on finish coat of latex paint. All case work shall receive two coats of an oil-base material.